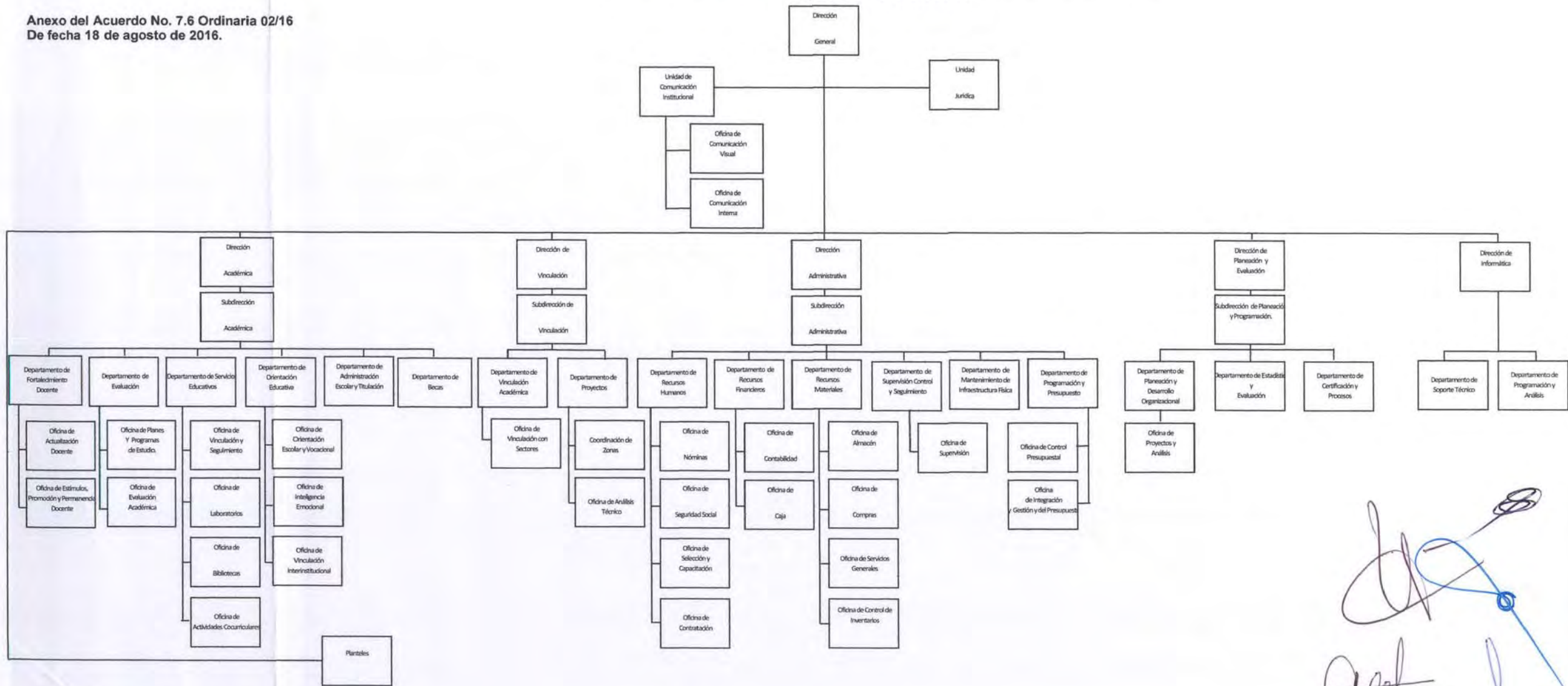


COLEGIO DE ESTUDIOS CIENTÍFICOS Y TECNOLÓGICOS DEL ESTADO DE CHIAPAS  
ESTRUCTURA ORGÁNICA

Anexo del Acuerdo No. 7.6 Ordinaria 02/16  
De fecha 18 de agosto de 2016.



Handwritten signatures and initials in blue and black ink, including a large signature at the top right and several smaller ones below it.

Handwritten initials "A.S." in the bottom left corner.